

Cancer Care

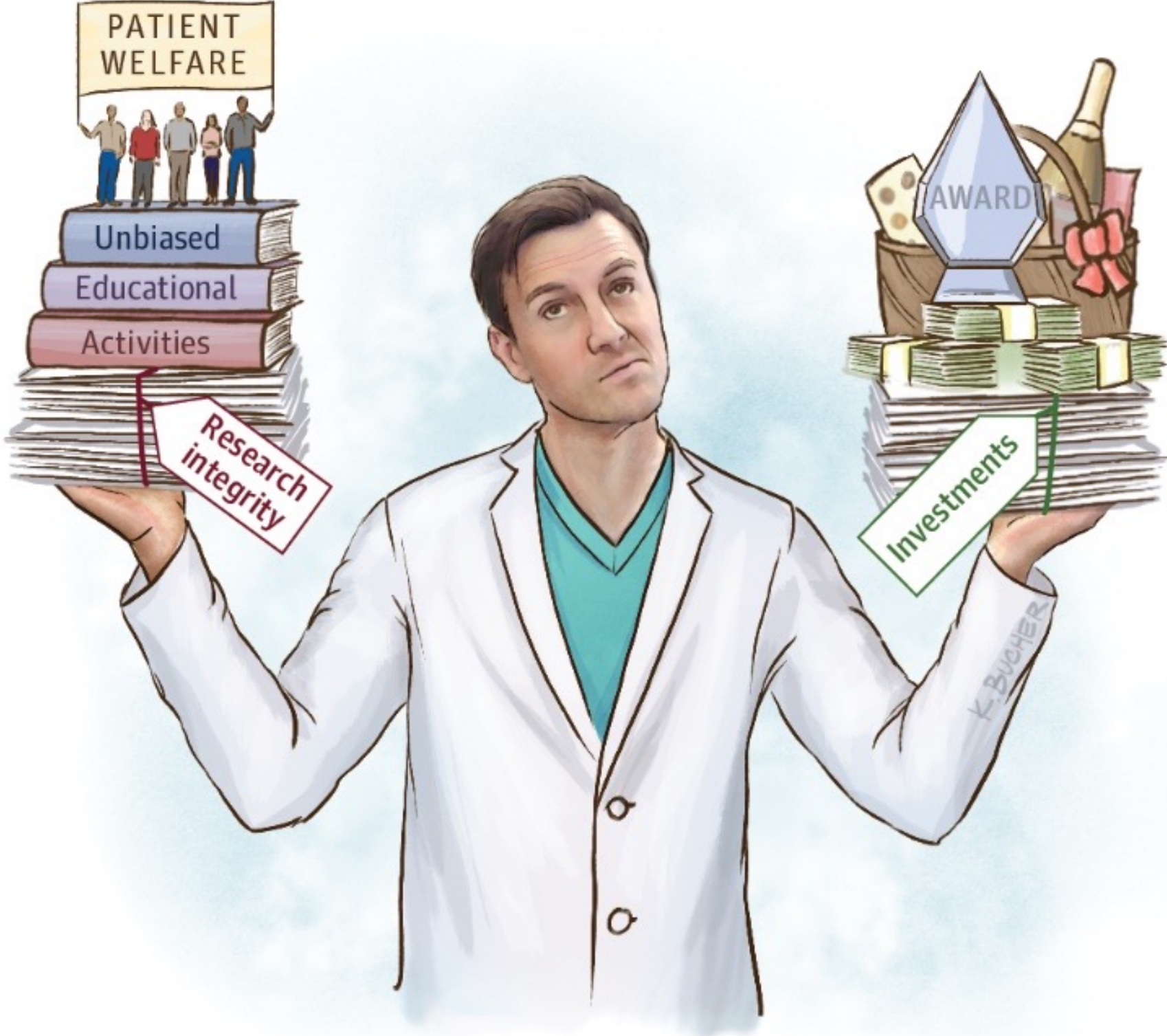
Paul E. Marik
MD, FCCM, FCCP



HEALTHCARE REVOLUTION
Restoring the Doctor-Patient Relationship

February 2-4, 2024 • Phoenix, Arizona

Conflicts of Interest



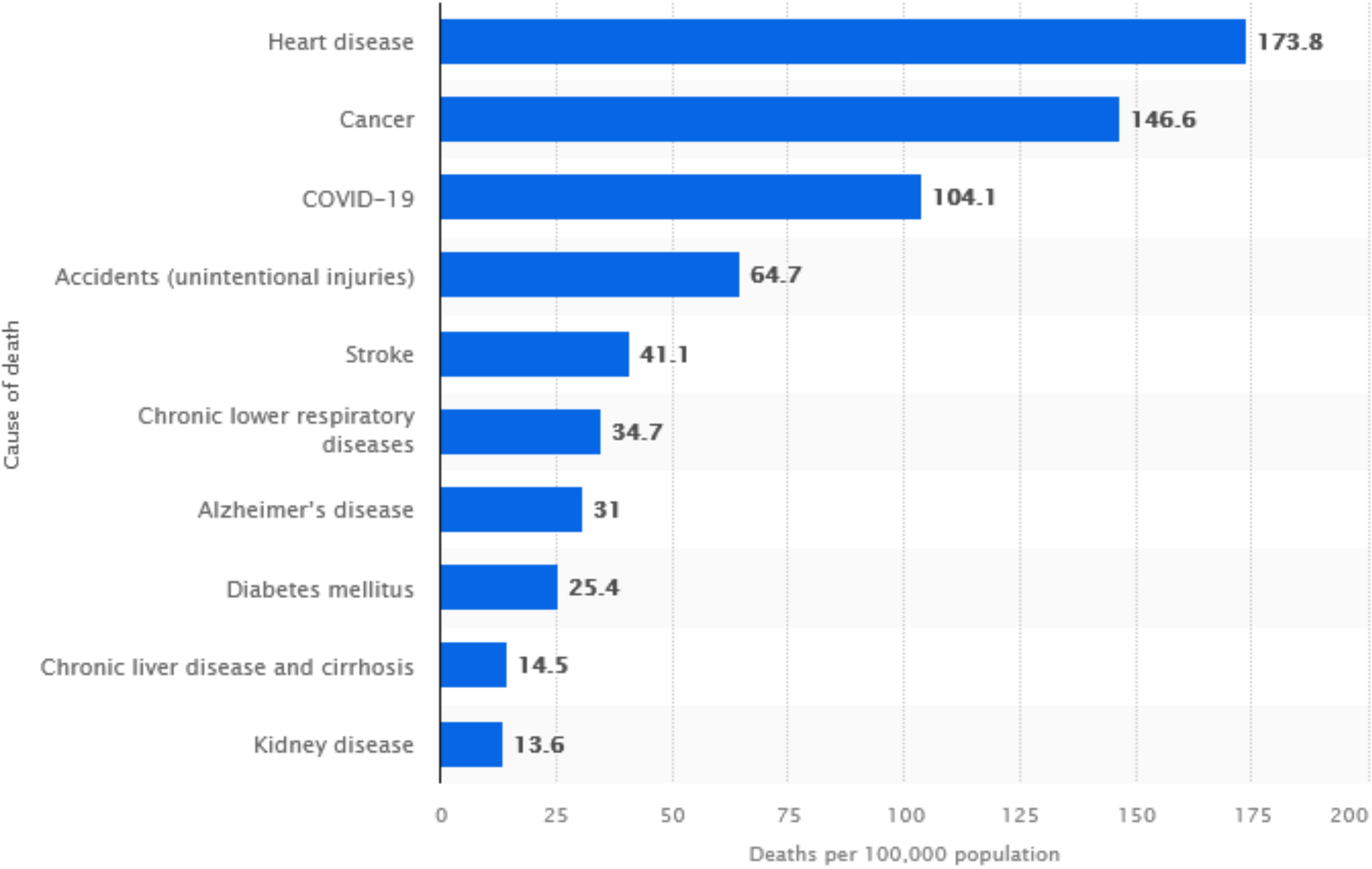


Drug repurposing for cancer treatments: a well-intentioned, but misguided strategy

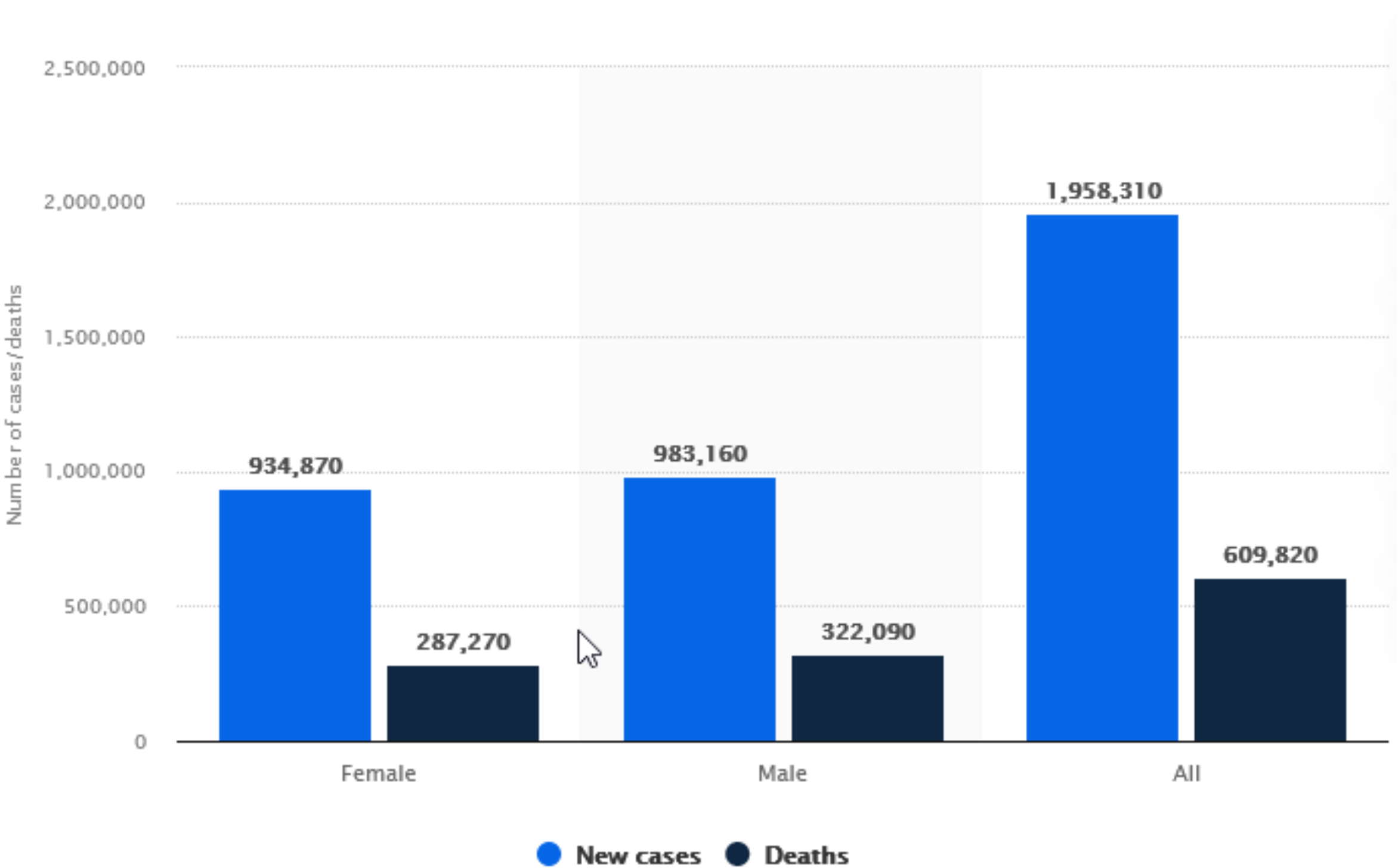
*Audrey A Tran, *Vinay Prasad*
vinayak.prasad@ucsf.edu



Leading causes of death in the United States in 2021 (per 100,000 population)*

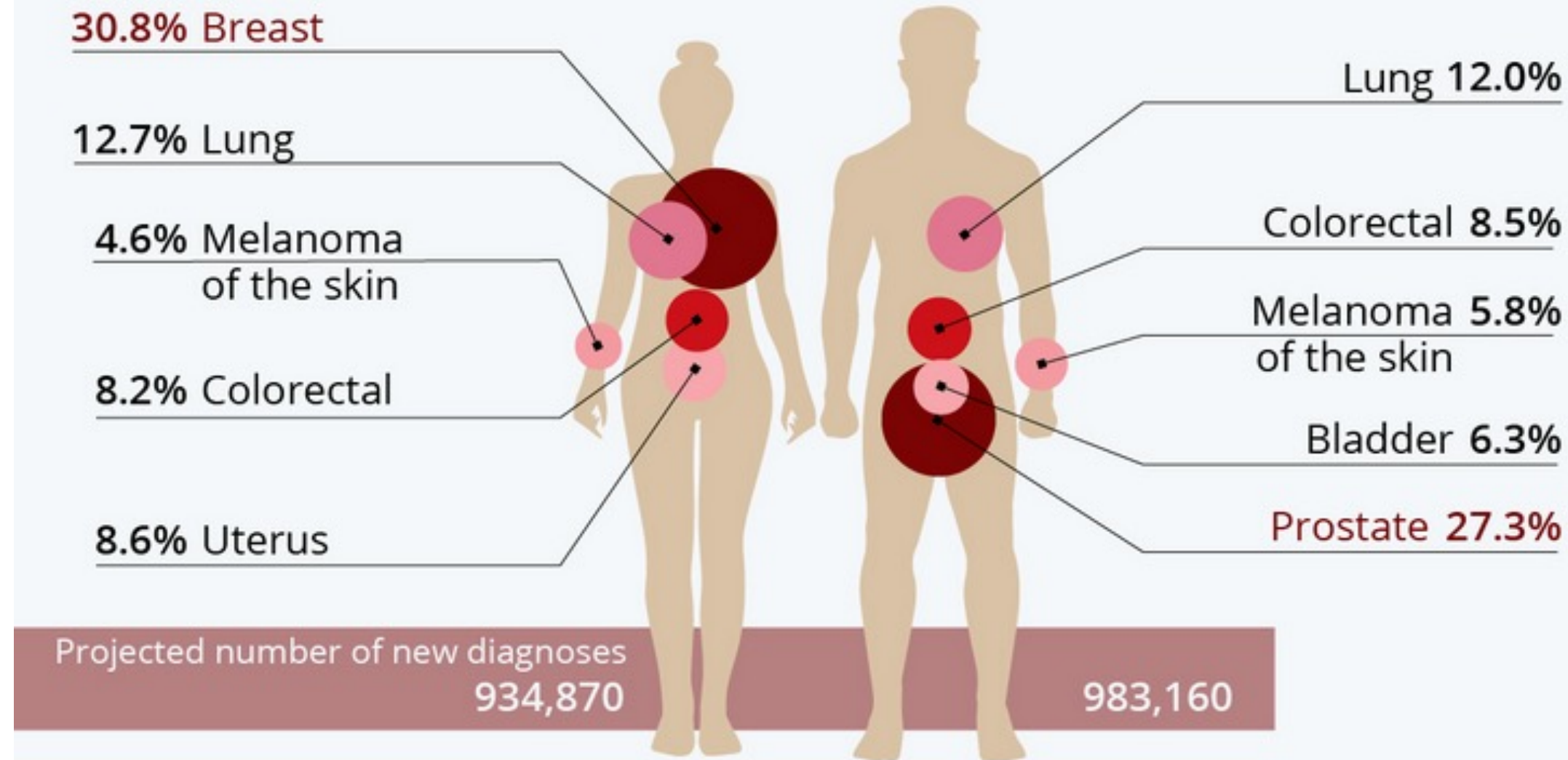


Estimated number of new cancer cases and deaths in the U.S. for 2023, by gender



The Most Common Types of Cancer in the U.S.

Projected share of new cancer diagnoses in the U.S. in 2022, by gender

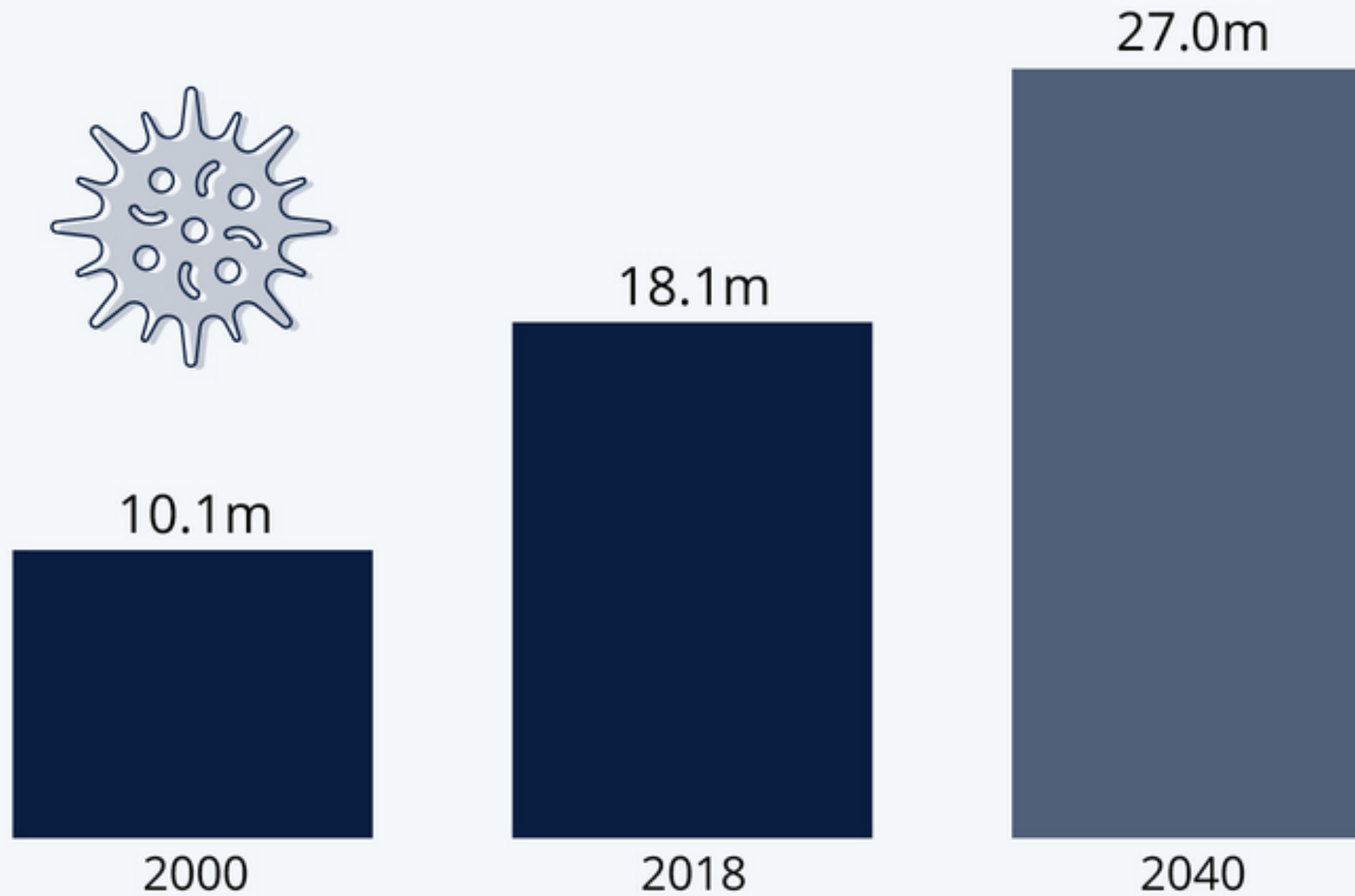


Source: American Cancer Society



Global Cancer Burden Continues to Rise

Estimated number of new cancer cases globally per year



Source: International Agency for Research on Cancer



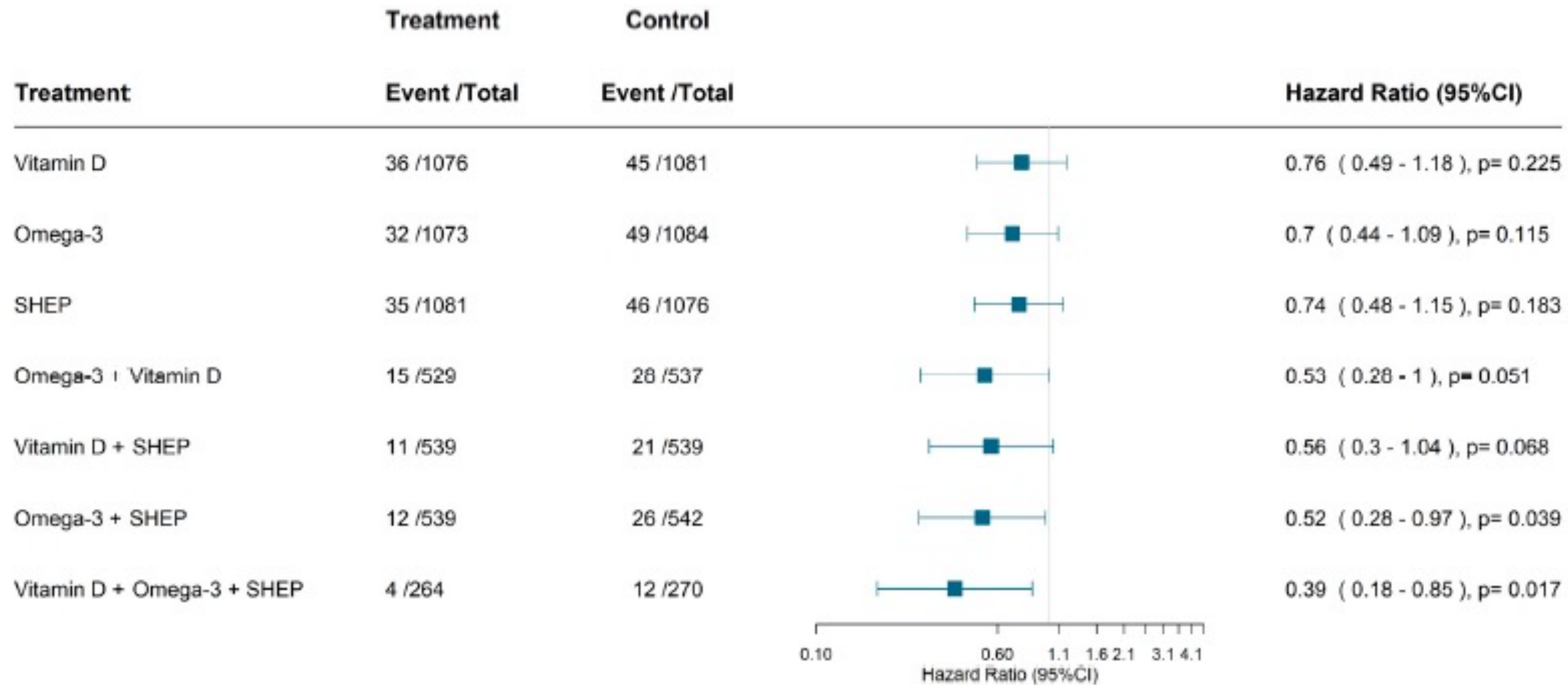
Cancer is a Preventable Disease

60-80% of cancers are preventable. How?

- Tackle insulin resistance (40% of all cancers)
- Quit smoking
- Limit alcohol
- Get enough Vitamin D
- Avoid processed foods
- Avoid sugary drinks and pure fruit juice
- Get enough exercise (aerobic and resistance training)
- Stress reduction
- 8 hours quality sleep



Vitamin D, Omega-3 FA and Home Exercise to Prevent Cancer: An RCT



TRADITIONAL CANCER TREATMENT OPTIONS



Hormone therapy



Immuno-therapy



Surgery



Radiation therapy



Bone Marrow Transplantation



Chemotherapy



Targeted therapy



Conventional Chemotherapy & Radiotherapy

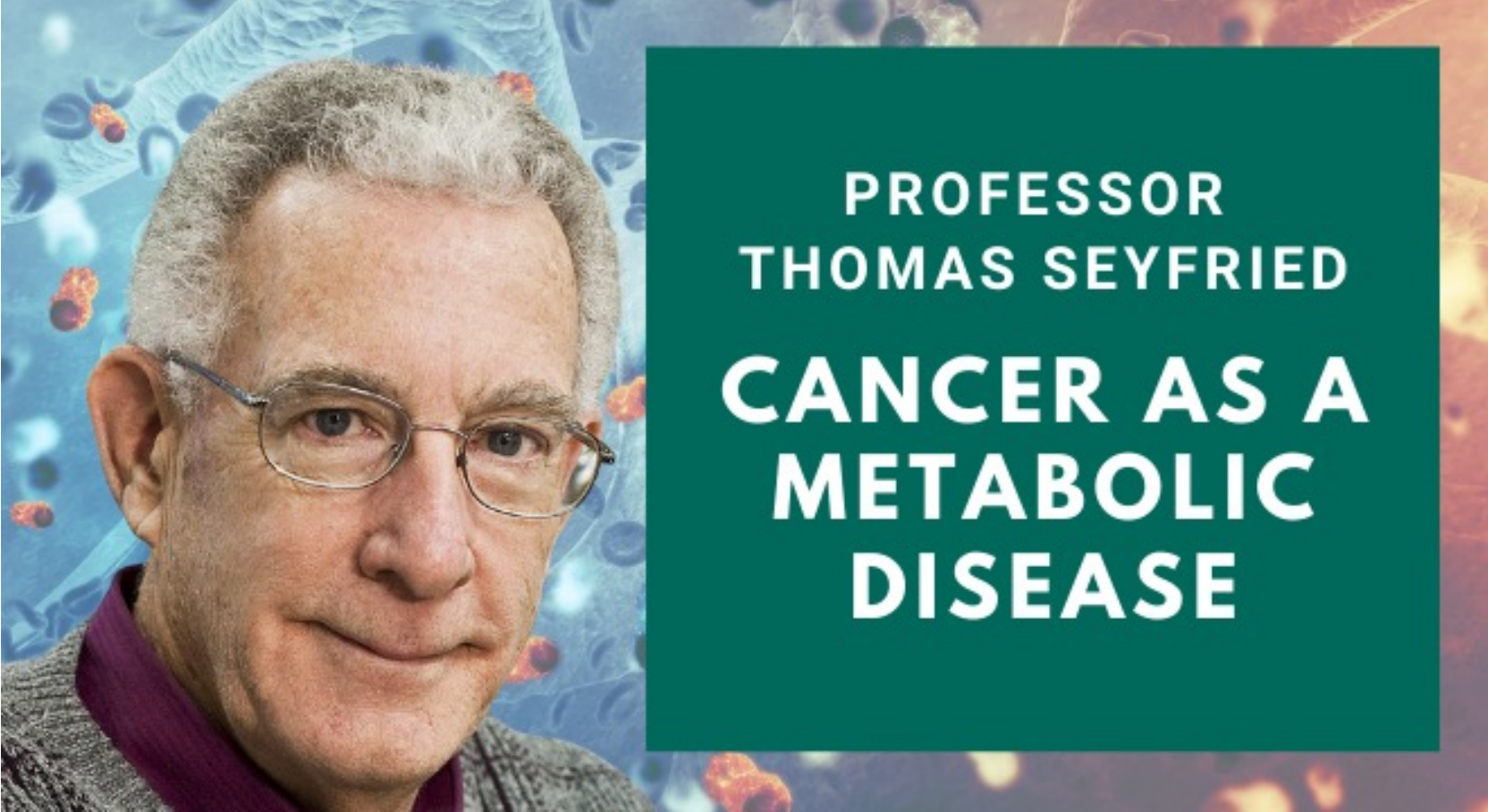
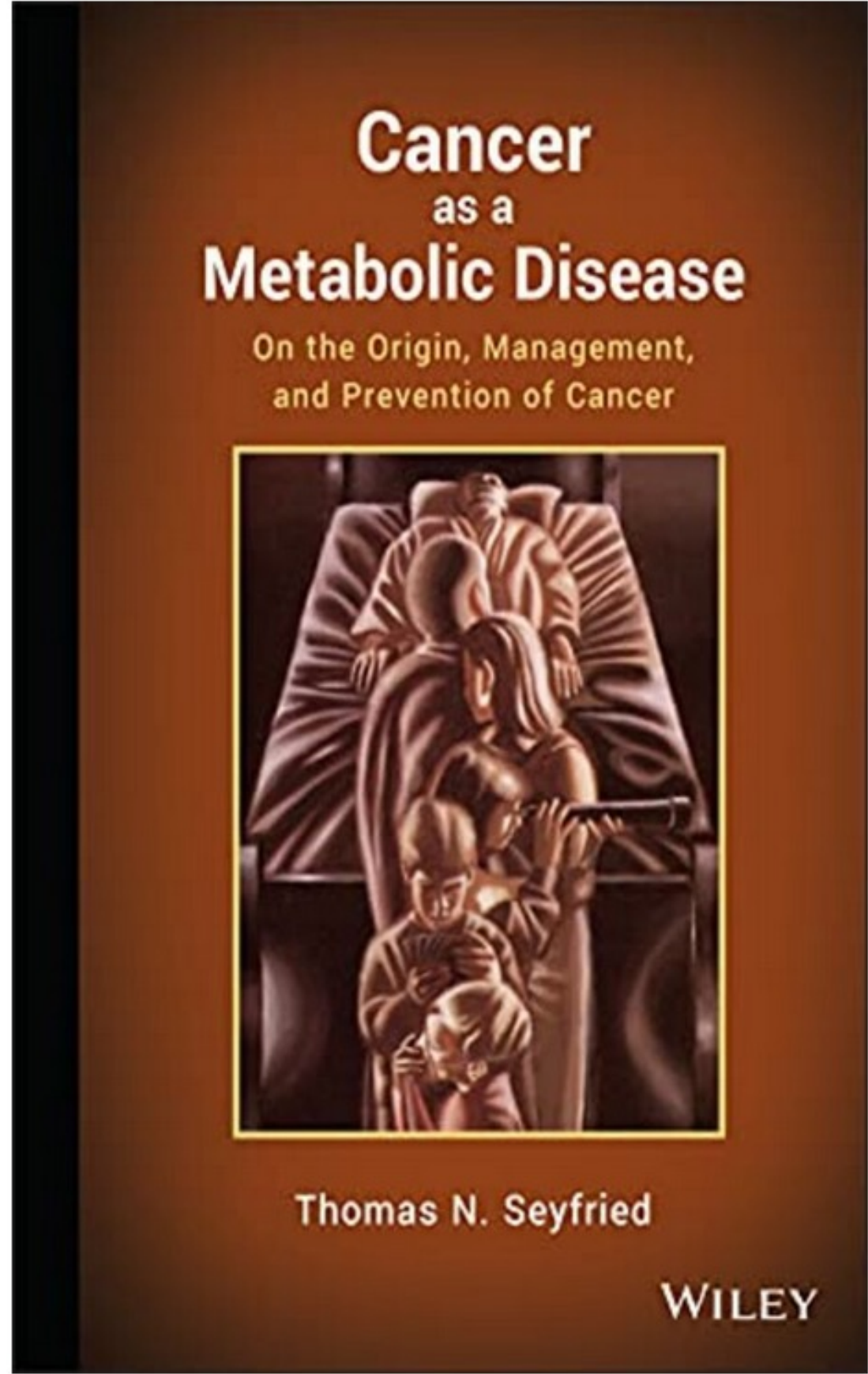
- Only target rapidly dividing cells
- Cancer Stem Cells allowed to proliferate
- Increase inflammation in Tumor Microenvironment
- Increase angiogenesis
- Increase metastatic potential
- Highly TOXIC
- Highly COSTLY



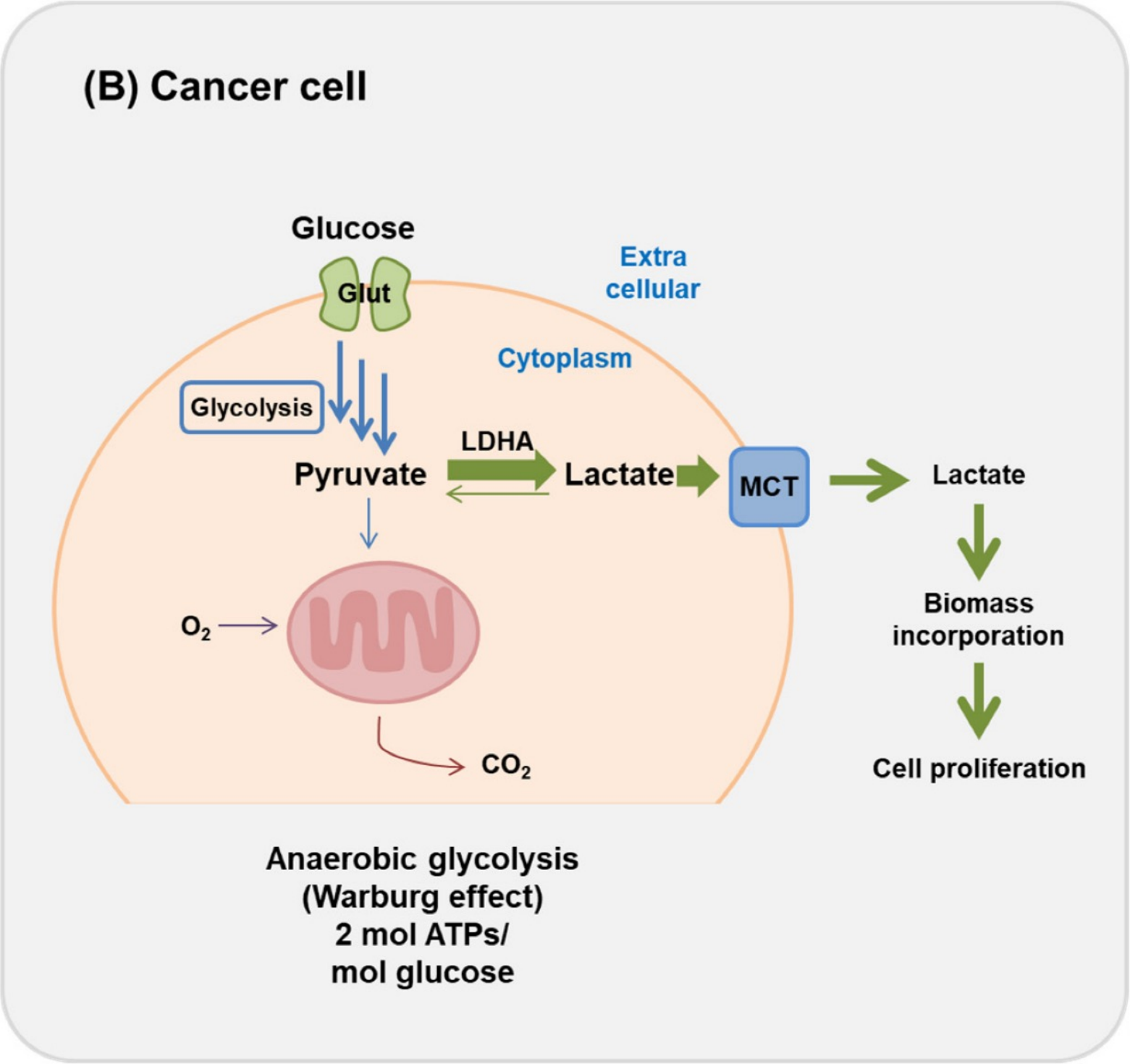
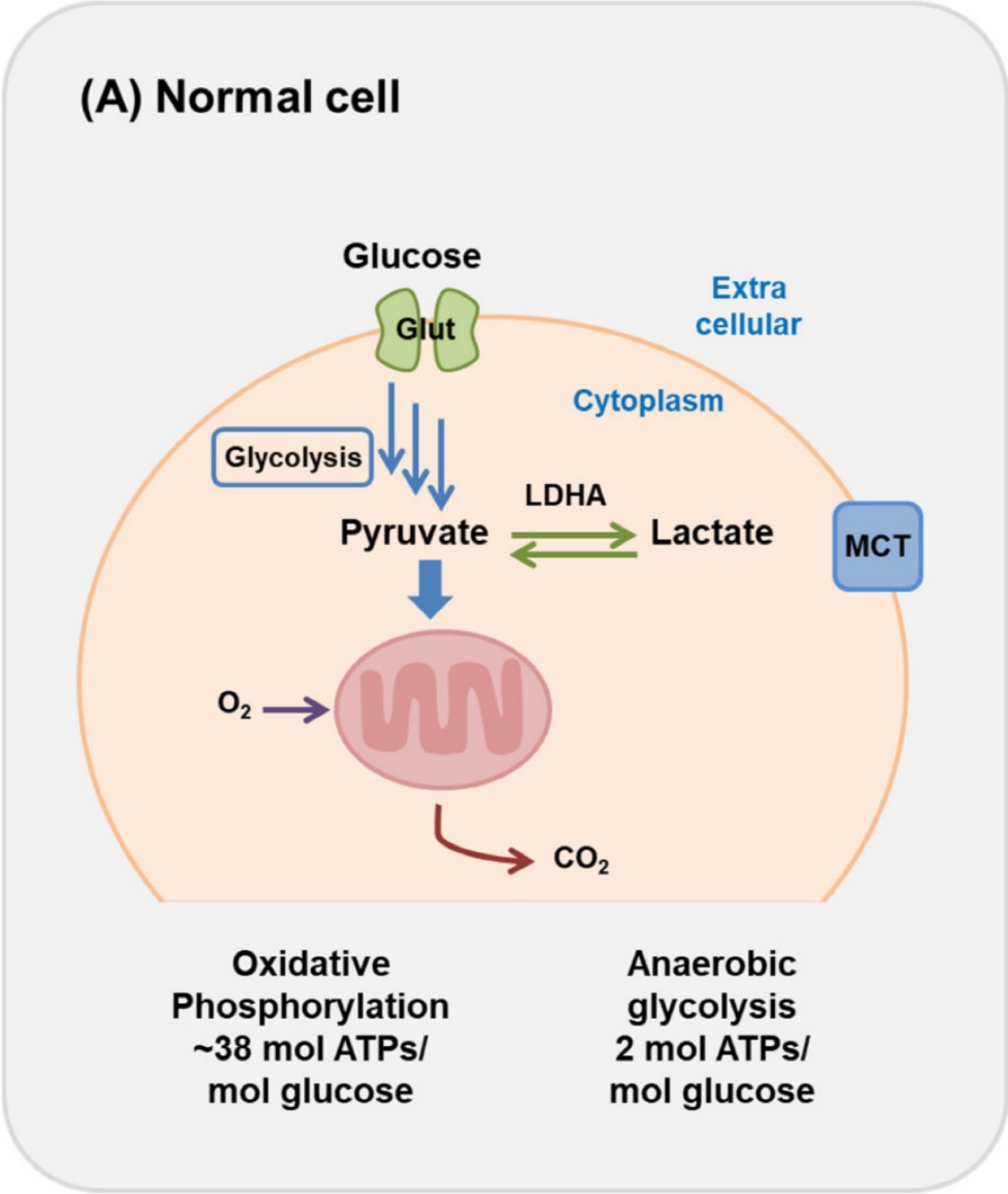
Chemotherapy “Curable” Cancer

Cancer Curable	Improves Survival	Palliation Only (metastatic)
Choriocarcinoma	Breast cancer	Colorectal
Acute lymphatic leukemia	Ovarian Cancer	Prostate cancer
Chronic lymphatic leukemia	ALL in adults	Pancreatic cancer
Testicular cancer	AML	Endometrial cancer
Ovarian germ cell tumor	Small cell lung cancer	Neuroblastoma
Hodgkin's lymphoma	Multiple myeloma	Melanoma
High Grade non-Hodgkin’s lymphoma	Osteosarcoma	Esophageal Cancer
Rare childhood malignancies	Wilms tumor	H&N cancer





Warburg phenomenon



Metabolic Interventions to Control Cancer

TOP 10

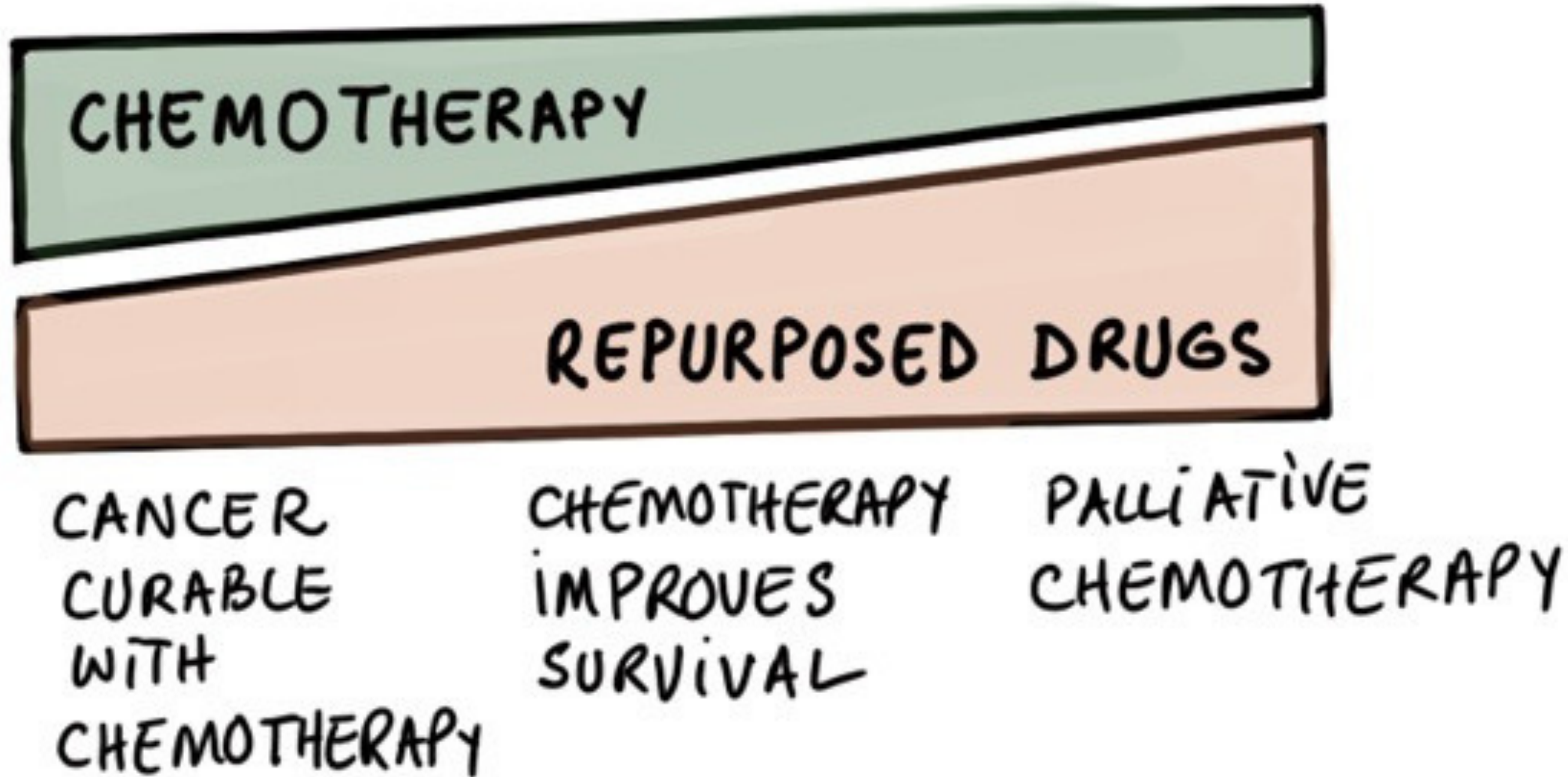
1. A low-carbohydrate, high-fat, ketogenic diet + time-restricted eating
2. Exercise, stress reduction, and quality sleep
3. Vitamin D3: 20,000 to 50,000 IU daily
 - Dosage should be adjusted by blood vitamin D levels aiming for a 25-OH vitamin D level of ~ 100 ng/ml.
4. Melatonin: start 1 mg and increase to 20-30 mg nightly
5. Green tea catechins: 500-1,000 mg daily
6. Metformin: 1,000 mg twice daily
7. Curcumin: (nanocurcumin) 600 mg twice daily
8. Mebendazole: 100-200 mg daily/Ivermectin 12mg daily
9. Omega-3 fatty acids: 4 g daily
10. Berberine: 500-600 mg twice daily

 *Over the Counter*

 *Requires a prescription*



Role of Chemotherapy and Repurposed Drugs



Personalized Management of Cancer

Repurposed Drugs & Metabolic Rx

Chemotherapy

Surgery

Stress Management & sleep

FLCCC
ALLIANCE
EDUCATIONAL
CONFERENCE



"TURBO CANCER"



Dr. Ryan Cole





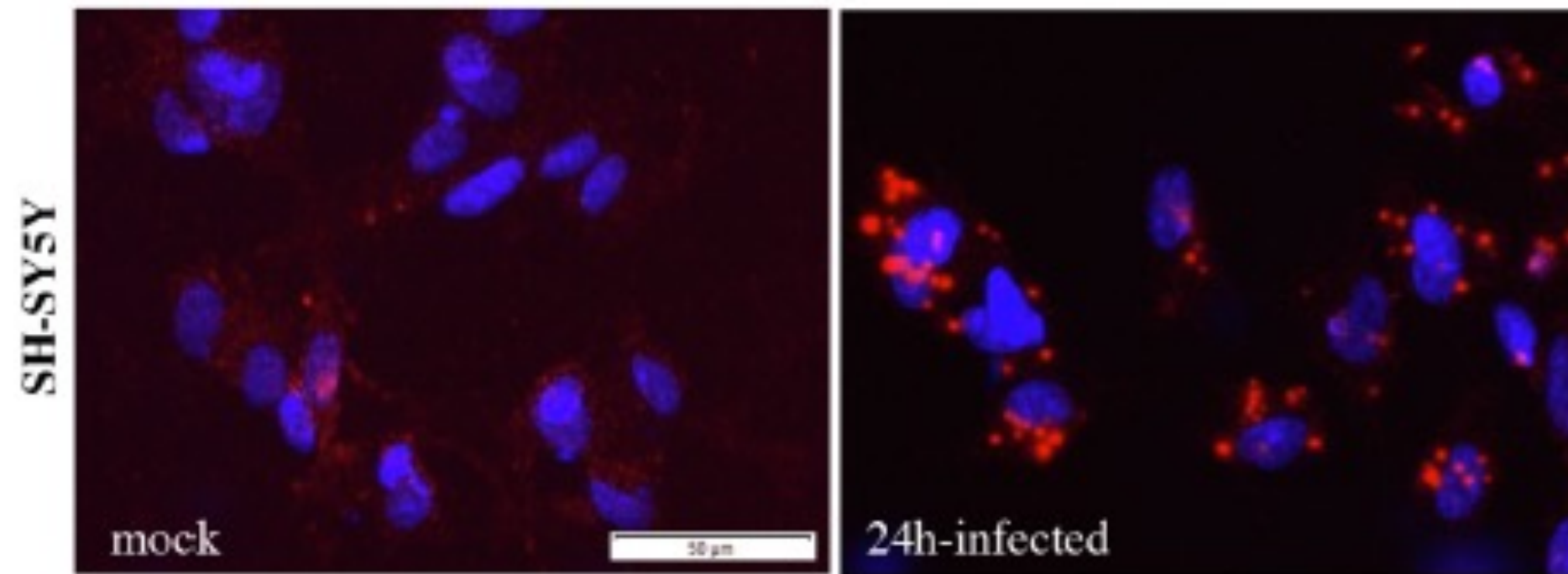
ELSEVIER

Contents lists available at [ScienceDirect](https://www.sciencedirect.com)

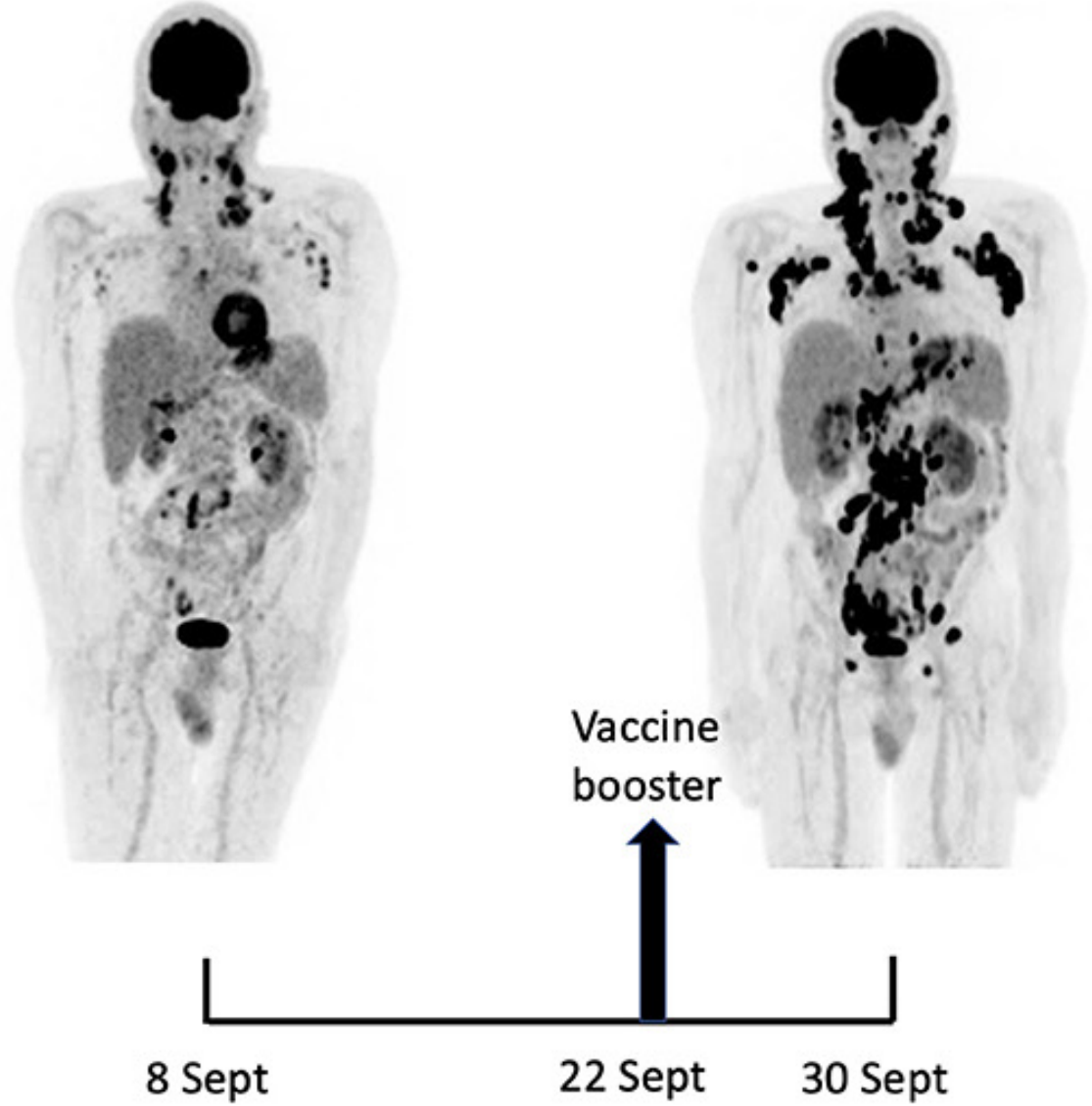
Brain Research

journal homepage: www.elsevier.com/locate/brainres

Susceptibility of neuroblastoma and glioblastoma cell lines to SARS-CoV-2 infection



Rapid Progression of Angioimmunoblastic T Cell Lymphoma Following BNT162b2 mRNA Vaccine Booster Shot: A Case Report



DMED Data: DoD whistleblower LTC Long

279% SPIKE in Miscarriages
487% SPIKE in Breast Cancer
1048% SPIKE in the Nervous System
155% SPIKE in Birth Defects
350% SPIKE in Male Infertility
369% SPIKE in Testicular Cancer
2181% SPIKE in Hypertension
664% SPIKE in Malignant Neoplasms
680% SPIKE in Multiple Sclerosis
551% SPIKE in Guillain-Barre Syndrome
468% SPIKE in Pulmonary Embolism
302% SPIKE in Tachycardia
452% SPIKE in Migraines
471% SPIKE in Female Infertility
437% SPIKE in Ovarian Dysfunction
269% SPIKE in Myocardial infarction
291% SPIKE in Bell's palsy
467% SPIKE in Pulmonary Embolism



Cancer and COVID Vaccines

Craig Paardekooper

November 7, 2023

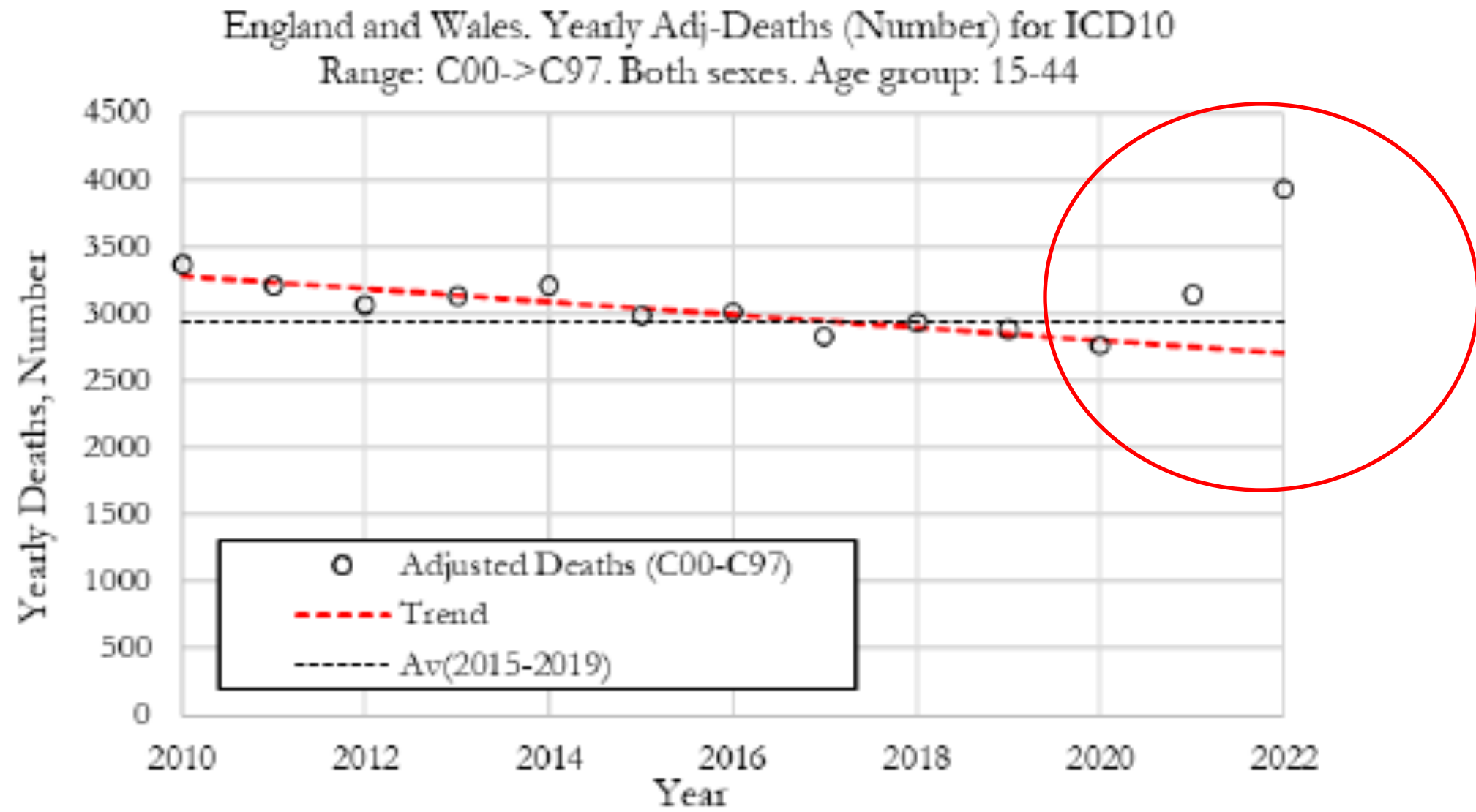
0.1 Highest PRR for Cancer

Out of all 99 vaccines in VAERS Covid vaccines have the HIGHEST PRR for -

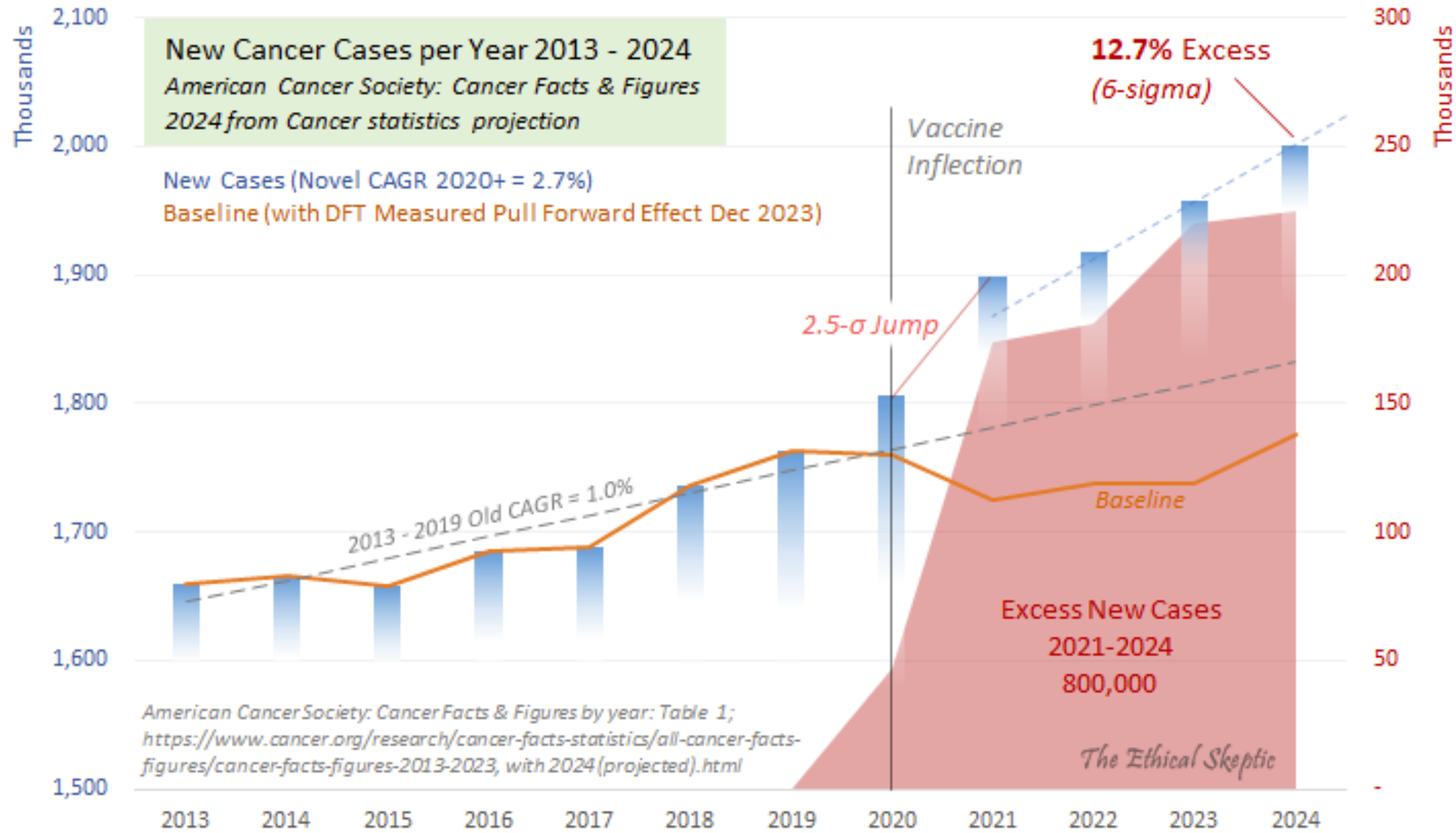
1. Appendix cancer (18.85)
2. Breast Cancer (4.07) : Breast Cancer Female (5.08), Breast Cancer metastatic (5.31), Breast Cancer Recurrent (4.71), Breast Cancer Stage 1 (18.85), HER2 positive Breast cancer (10.77)
3. Cancer Screening (7.96)
4. Colon cancer metastatic (6.77)
5. Colorectal cancer (5.97)
6. Endometrial cancer (12.06)
7. Hepatic cancer (7.56), Hepatic cancer metastatic (3.58), Hepatic cancer stage 4 (25.13),
8. Laryngeal cancer stage 4 (75.41)
9. Lung cancer metastatic (4.51)
10. Oesophageal cancer metastatic (25.13)



UK - Death and Disability Trends for Malignant Neoplasms (15-44)



Excess Cancer Deaths -USA



Received: 5 October 2023 | Accepted: 5 October 2023
 DOI: 10.3322/caac.21820

ARTICLE

Cancer statistics, 2024





Wikipedia

https://en.wikipedia.org/wiki/Turbo_cancer ⋮

Turbo cancer

Turbo cancer is an anti-vaccination myth centred on the idea that people vaccinated against COVID-19, especially with mRNA vaccines, are suffering from a ...





FLC^CCC
ALLIANCE

**EDUCATIONAL
CONFERENCE**

